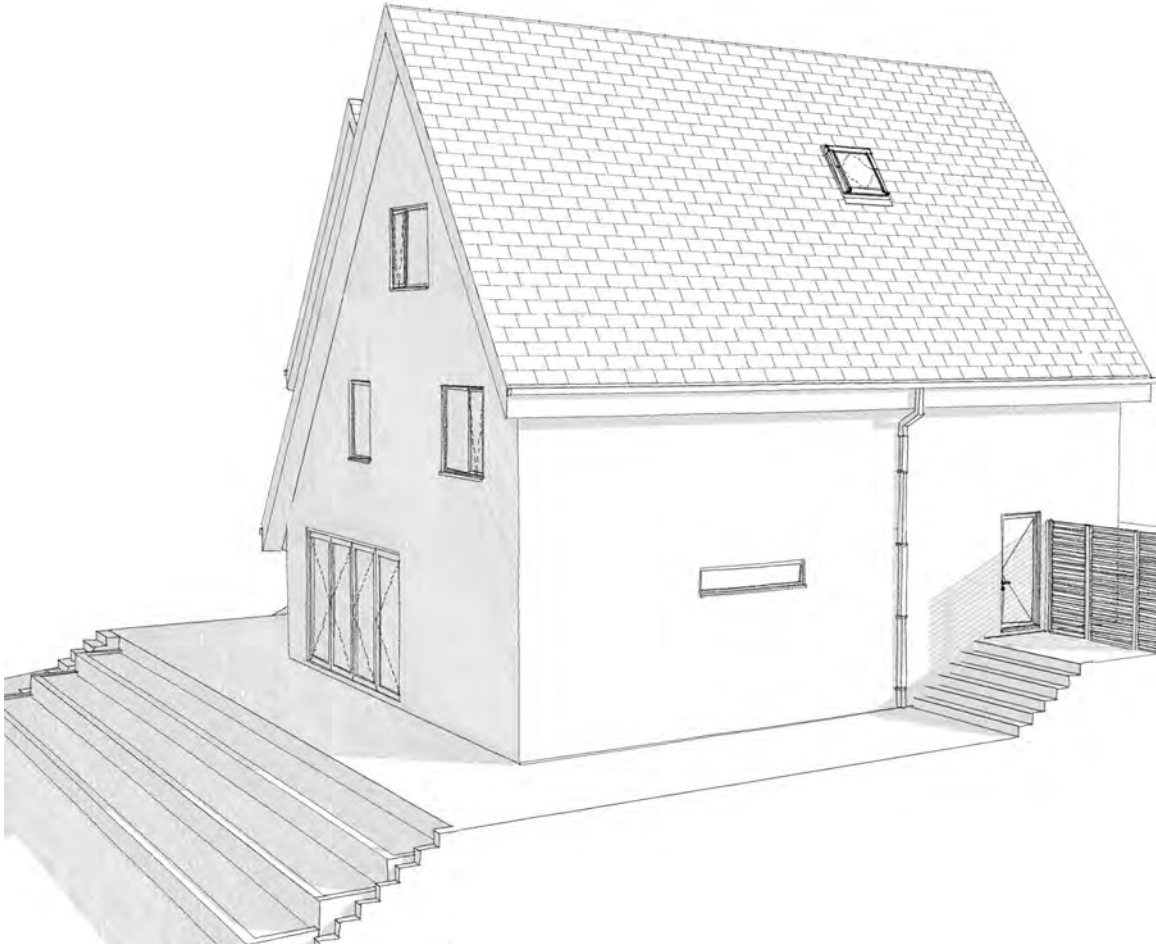


15 December 2017

Non-Material Amendment Statement
24 DOWNS HILL BECKENHAM BR3 5HB



Amendment 1.

The rear glass doors are to be changed from sliding openers to folding openers.

The window heights on both the front and rear elevations will be reduced in height on average by 200mm. To keep the height of opening sashes as on the application drawings would require horizontal transoms which is not considered desirable.

As the side elevation windows will be obscure glazed they are to be re-configured to be longer, vertically slimmer and set higher in the wall for aesthetic reasons. Additionally, one will be omitted from the north facing elevation.

Amendment 2.

The wide steps down in the centre of the terrace are to be replaced with two less wide ones at either side. The balustrade will be omitted altogether. The danger of a person being injured by falling will be overcome by placing planted beds dropping the levels down from the terrace incrementally.



Amendment 3.

For reasons of privacy and security the owners wish to close of the spaces between the side of the house and the boundary with the neighbouring residences. To achieve this installation of a two-metre tall timber slatted fence set back from the front elevation is proposed. There will be an opening gate on the north side and it would be fixed on the south side.